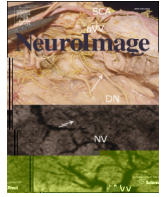




Contents lists available at ScienceDirect

journal homepage: [www.elsevier.com/locate/ynimg](http://www.elsevier.com/locate/ynimg)



Department of Psychology, Peking University, Beijing 100871, China  
PKU-IDG/McGovern Institute for Brain Research, Peking University, Beijing 100871, China  
Peking-Tsinghua Center for Life Sciences at School of Life Sciences, Peking University, Beijing 100871, China

ARTICLE INFO

ABSTRACT

Article history:

20 J 2015  
28 J 2015

Keywords:

( 53576) / / / ( / - ) / ( ) , / - 53576 2015

Introduction

( , 2010), ( , 2013); ( , 2010; , 2011), ( , 2014) ; ( ) ( , 2011) ; ( , 2002; , 2002; , 2009; , 2011). ( ) ( , 2013). ( , 2002; , 2011; , 2005; , 2007; , 2007; , 2004; 2013). ( , 2009; , 2010, 2012; , 2011; , 2011), ( , 2009; , 2013) ( , 2011) ( , 2012; , 2008). ( , 2013, 2014)

\* 100080, : +86 10 6276 1081.  
E-mail address: ( )



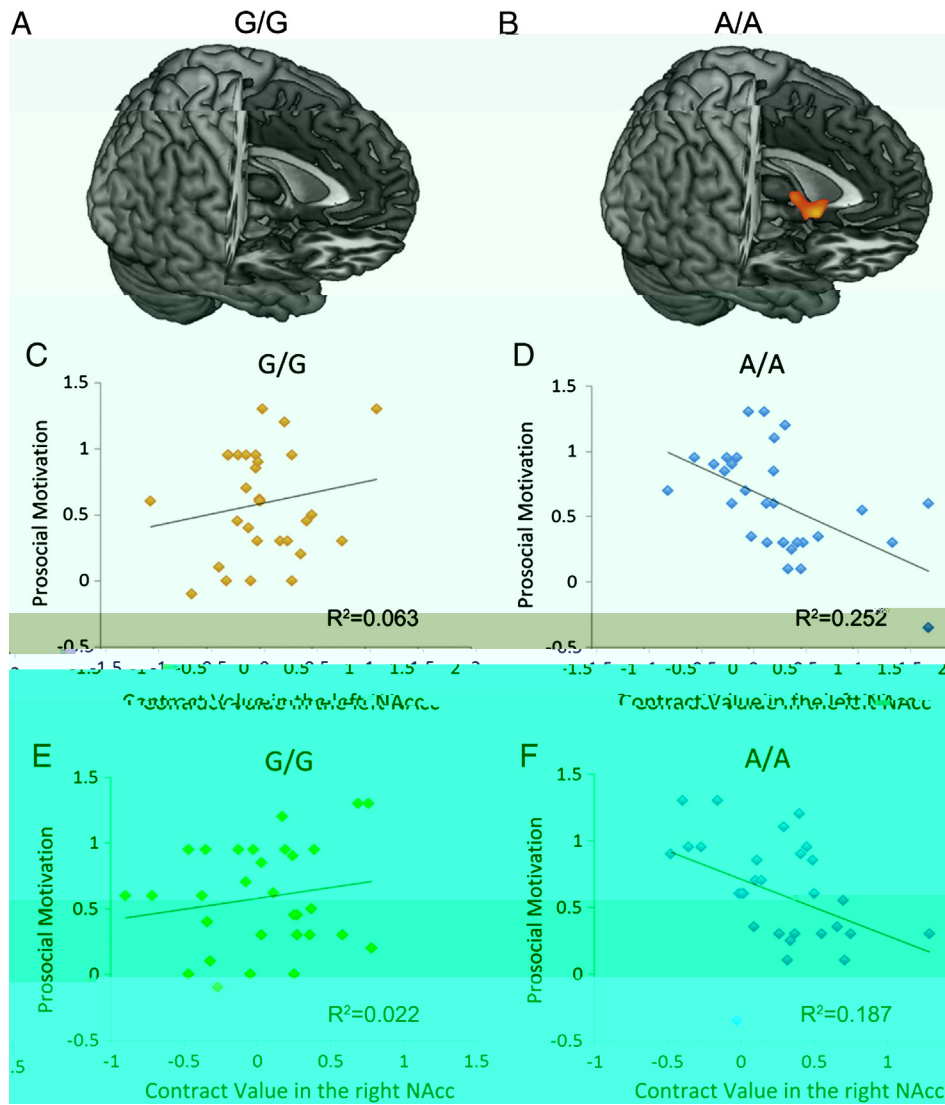






$$\begin{aligned}
 & \left( \begin{array}{c} - \\ - \\ - \end{array} \right) \quad \left( \begin{array}{c} - \\ - \\ - \end{array} \right) \\
 & / - \quad ( // = 0/36/42) \quad / \\
 & < 0.05 ( // = -4/8/-6) \quad /
 \end{aligned}$$

$$\text{fi} \quad (0.24 \quad 0.47, (59) = 3.06,$$



**Fig. 4.** ... ( - - ) ( - - )

... = -0.43, < 0.05, ... .4 ) / ( : = 0.25, = 0.18, : = 0.15, = 0.43, ... .4 fi 53576

( > 0.05). , fi ( 4 5). fi

( > 0.05).

**Discussion** : 0.67 . 0.60, (59) = 2.35, < 0.05). ( (58) = 0.20 & 0.47, > 0.6). 53576

fi / ( : = -0.50, < 0.005, : j

53576 (2009), (2007), (1989). fi (2009). (2004; 2005; 2007; 2009; 2009; 2011; 2014), (53576). (2013; 2011; 2011). fi (2010), 53576, (2000; 2002) (1992) (2013). (2009; 2013). (2011) (2013). fi 53576 (2011). 53576 (2002; 2006). 53576 (2009; 2009; 2010; 2014) (2005). 53576 (2010). fi 53576 (2005) (2013). fi (2006), fi



( , 1992)

J  
., 2002;

., 2009;

( ., 2002;  
., 2011).

....., 2009. .30,  
3227-3237.  
....., 2007. 316, 1622-1625.  
....., 2010.  
68, 149-160.  
....., 2006. -  
....., 2002. 31, 859-866.  
575-604. 53,  
....., 2010.  
....., 1992. .30, 4999-5007.  
..... 89, 5981-5985.  
....., 2009. .13,  
524-531.  
....., 2005. P  
....., 2002. 24, 771-779.  
....., 2010. 32, 1208-1223.  
....., 2010. fi  
....., 107, 15717-15721.  
....., 2011. -  
....., 2, 665-672.  
....., 2015.  
( ) 5( )-2966247714019623( . \* )-9 ( 66(97103-)36(8710 )28( )34( )30(5( 8733( .)30(,)28 10 J/( 148(,)271( 0 0-19( )18-